

For Sale & Lease

## Office/Medical Office



## 1414 N Vercler Road Bld II

Spokane Valley, Washington 99216

### Property Description

Building Size: 3,149 SF +/- plus Full Basement

- Main Floor: 3,149 SF +/-
  - Lower Level: Full Basement with 370 SF +/- Finished
- Leased until 10/31/21. CLA for rent details.

Pursuant to CC&R's, use must be medical related

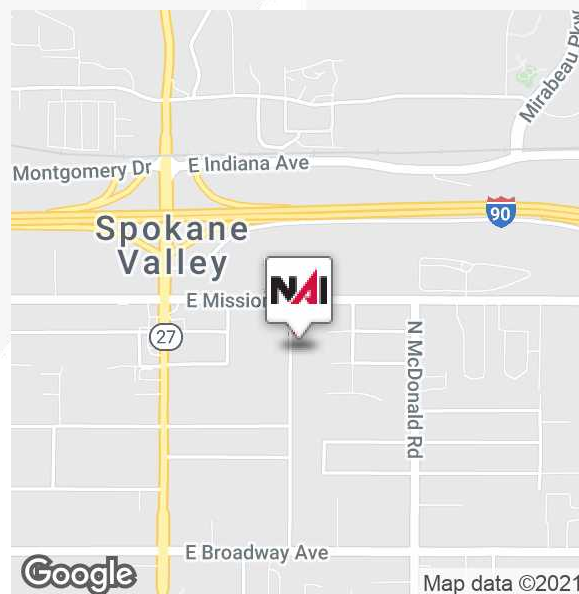
Seller contract available

Located across the street from MultiCare Valley Hospital

Tenant pays own separate utilities and janitorial

**Sale Price: \$600,000**

**Lease Rate: \$16.50 SF/yr (MG)**



For more information

**James Black III, CCIM**

O: 509 622 3551

jblack@naiblack.com

**Jon Jeffreys, SIOR**

O: 509 622 3566

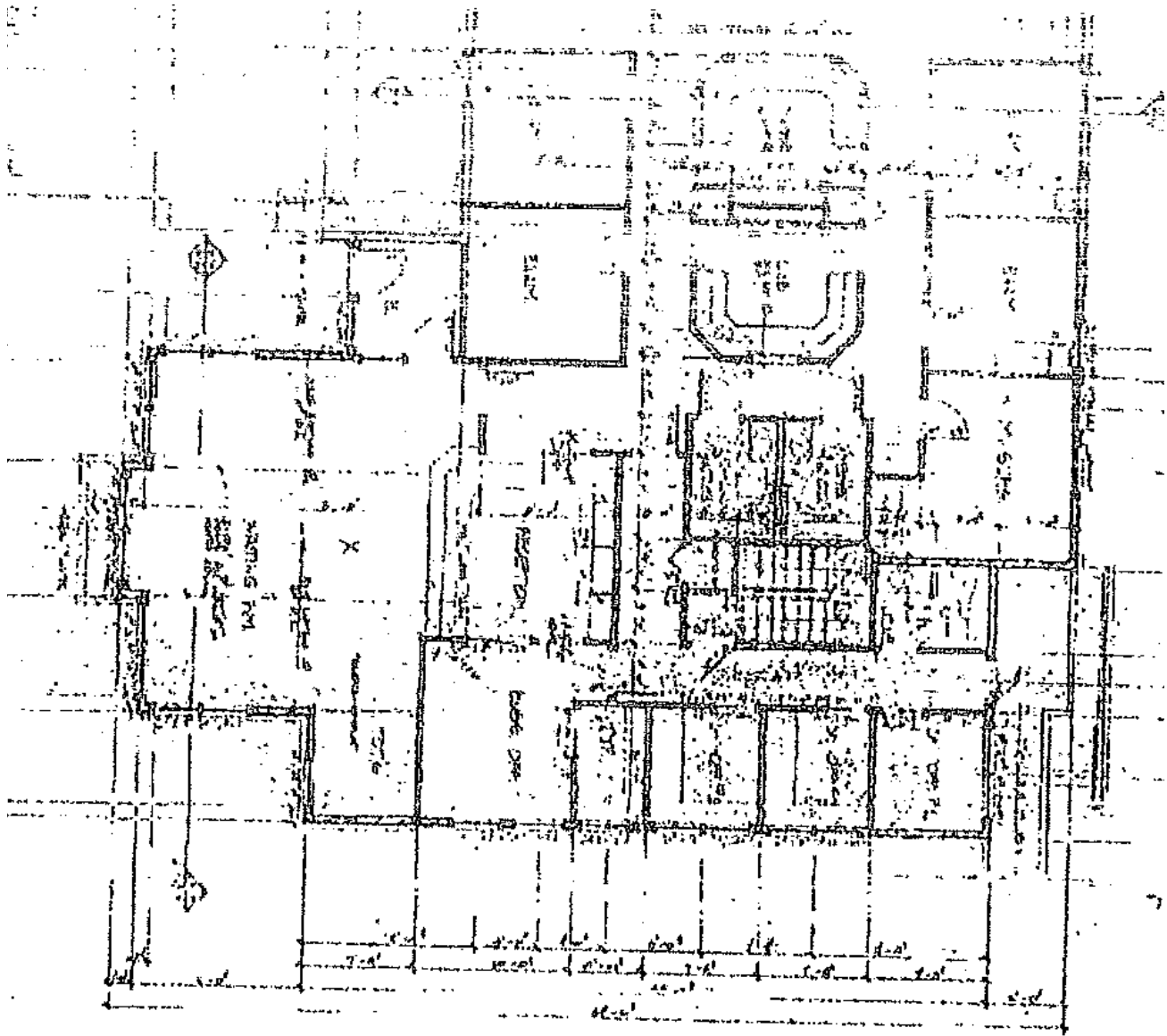
jjeffreys@naiblack.com

No warranty or representation, expression or implied, is made as to the accuracy of the information contained herein, and the same is submitted subject to errors, omissions, change or price, rental or other conditions, prior to sale, lease, financing, or withdrawal without notice, and of special listing conditions imposed by our principals no warranties or representations are made as to the condition of the property or any hazards contained therein or any to be implied.

801 W. Riverside Avenue, Suite 300  
Spokane, WA 99201  
509 623 1000 tel  
[naiblack.com](http://naiblack.com)

For Sale & Lease

# Office/Medical Office



No warranty or representation, expression or implied, is made as to the accuracy of the information contained herein, and the same is submitted subject to errors, omissions, change or price, rental or other conditions, prior to sale, lease, financing, or withdrawal without notice, and of special listing conditions imposed by our principals no warranties or representations are made as to the condition of the property or any hazards contained therein or any to be implied.

801 W. Riverside Avenue, Suite 300

Spokane, WA 99201

509 623 1000 tel

[naiblack.com](http://naiblack.com)



For Sale & Lease

# Office/Medical Office



No warranty or representation, expression or implied, is made as to the accuracy of the information contained herein, and the same is submitted subject to errors, omissions, change or price, rental or other conditions, prior to sale, lease, financing, or withdrawal without notice, and of special listing conditions imposed by our principals no warranties or representations are made as to the condition of the property or any hazards contained therein or any to be implied.

801 W. Riverside Avenue, Suite 300  
Spokane, WA 99201  
509 623 1000 tel  
[naiblack.com](http://naiblack.com)