

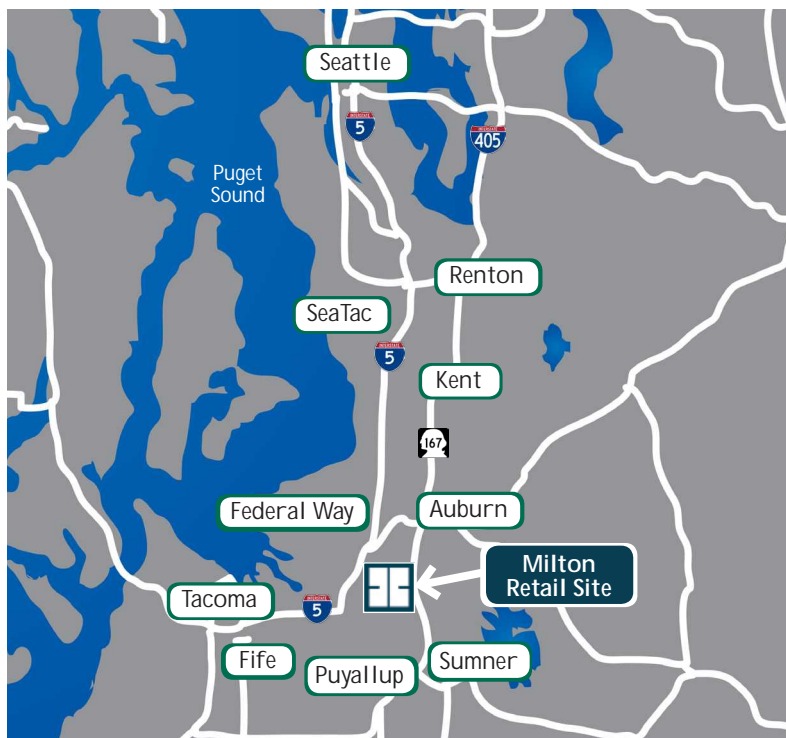
The Benaroya Company

Milton Retail Site



FOR SALE OR BUILD-TO-SUIT

Located at the high traffic, high visibility corner of East Meridian and Emerald Street, this 30,000 square foot retail site is available for sale or for build-to-suit. The site includes all utilities.



LOCATION

400 East Meridian | Milton WA

FEATURES

- 30,000 SF site
- Sale price \$600,000
- Zoned Business
- Retail - Automotive - Office
- All utilities to the site
- High traffic public streets on three sides of property
- Individual tax lot

CONTACT:



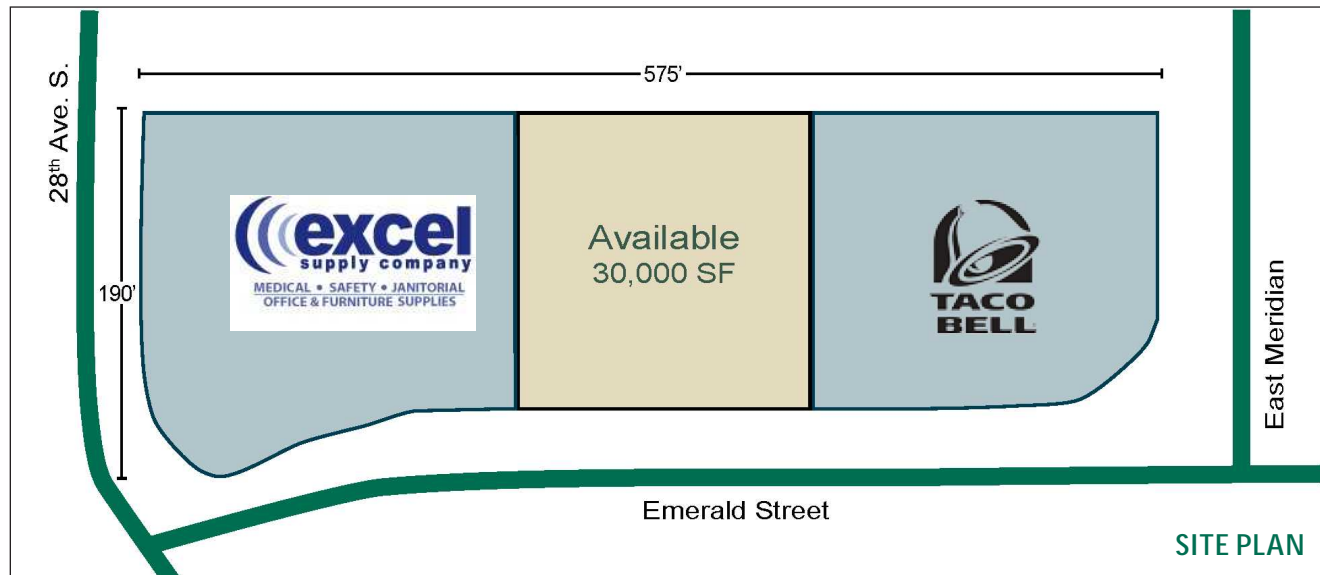
Arvin Vander Veen, SIOR
T 206.654.0521
arvin.vanderveen@colliers.com



Mike McKernan
T 206.985.0109
mike@rpillc.net

The Benaroya Company

Milton Retail Site



TRAFFIC VOLUME

Source: 2015 Market Planning Solutions, Inc.

CONTACT:

Arvin Vander Veen, SIOR
T 206.654.0521
arvin.vanderveen@colliers.com



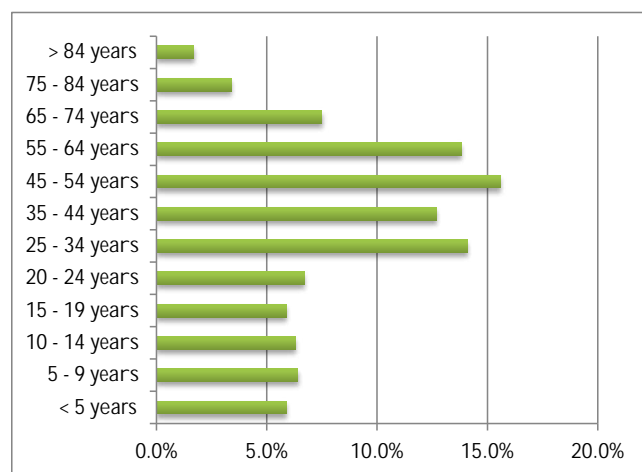
Mike McKernan
T 206.985.0109
mike@rpillc.net

The Benaroya Company

Milton Retail Site

Demographic and Income Profile	2015* 1 mile radius	2020* 1 mile radius	2015* 3 mile radius	2020* 3 mile radius
Population	8,239	8,670	45,874	48,488
Households	3,126	3,271	17,180	18,103
Average Household Income	\$87,226	\$98,239	\$83,558	\$94,686
Household Income <\$35,000	17.6%	12.7%	20.3%	15.6%
Household Income >\$35,000 & <\$100,000	48.2%	46.5%	49.0%	47.5%
Household Income > \$100,000	34.2%	40.8%	30.7%	36.9%

*Esri forecasts for 2015 & 2020



Population 2015 | 1 mile radius*

CONTACT:

Arvin Vander Veen, SIOR
 T 206.654.0521
 arvin.vanderveen@colliers.com



Mike McKernan
 T 206.985.0109
 mike@rpillc.net

The Benaroya Company

Milton Retail Site

AMENITIES MAP



RETAIL

1. 2nd Peek Boutique
2. 7-Eleven
3. Auto Zone
4. Baker's Automotive
5. Dollar Tree
6. Glamour Nails
7. GNC
8. Haggen
9. Hallmark
10. Hometown Hardware
11. Mj Liquor & Wine
12. O'Reilly's
13. Pet Pros
14. Radio Shack
15. Rite Aid
16. Safeway
17. Walgreens

SERVICES

1. Children's Character Club
2. BP Station
3. Dill Animal Hospital
4. Edgewood Dry Cleaners
5. La Petite Academy
6. Pierce County Library
7. Rainbow Childcare
8. Shell Station
9. TLC Catering
10. US Post Office

RESTAURANTS

1. A Spoonful of Sugar
2. Arby's
3. Bud's Bar & Grill
4. Dairy Queen
5. Domino's
6. Gikan Teriyaki
7. McDonalds
8. Melaque
9. My Greek Mediterranean Grill
10. Oliver's Sandwiches
11. Pizza Hut
12. Poverty Bay Coffee Company
13. Puerto Vallarta
14. Ranchito Mexican
15. Starbucks (2)
16. Subway
17. Taco Bell
18. Taco Time
19. Yoko Teriyaki

BANKS

1. Bank of America
2. Chase Bank
3. Columbia Bank
4. Key Bank
5. US Bank
6. Valley Bank

CONTACT:

Arvin Vander Veen, SIOR
 T 206.654.0521
 arvin.vanderveen@colliers.com



Mike McKernan
 T 206.985.0109
 mike@rpillc.com