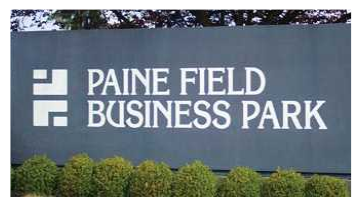


# PAINE FIELD BUSINESS PARK I

2615 WEST CASINO ROAD | EVERETT, WA 98204



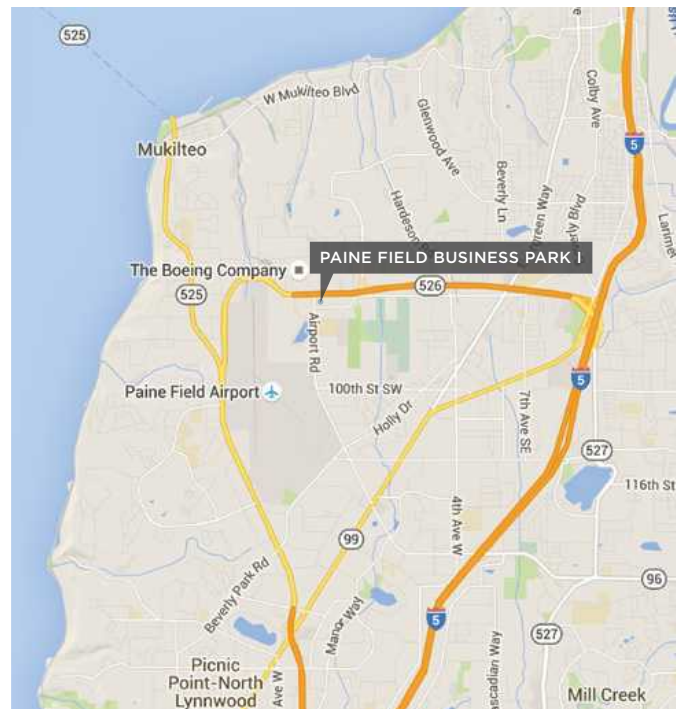
## BUSINESS PARK SPACE AVAILABLE ADJACENT TO PAINE FIELD

### AVAILABLE SPACE

Suites ranging from 1,827 RSF to 2,091 RSF

### PROPERTY FEATURES

- High profile space catering to service companies, small businesses, sales & distribution centers
- Grade level loading
- Spaces are “move-in” condition
- Convenient South Everett location
- Across the street from Boeing 777 & 787 plant
- Direct access to SR-526 & I-5
- Restaurants and shopping center nearby



10500 NE 8th Street, Suite 900  
Bellevue, Washington 98004  
425.646.3444 • [broderickgroup.com](http://broderickgroup.com)

For further information or to schedule a tour:

**Tyler Slone** | 425.274.4281 | [slone@broderickgroup.com](mailto:slone@broderickgroup.com)

**Connor Gilchrist** | 425.274.4286 | [gilchrist@broderickgroup.com](mailto:gilchrist@broderickgroup.com)

Owned and Managed by:



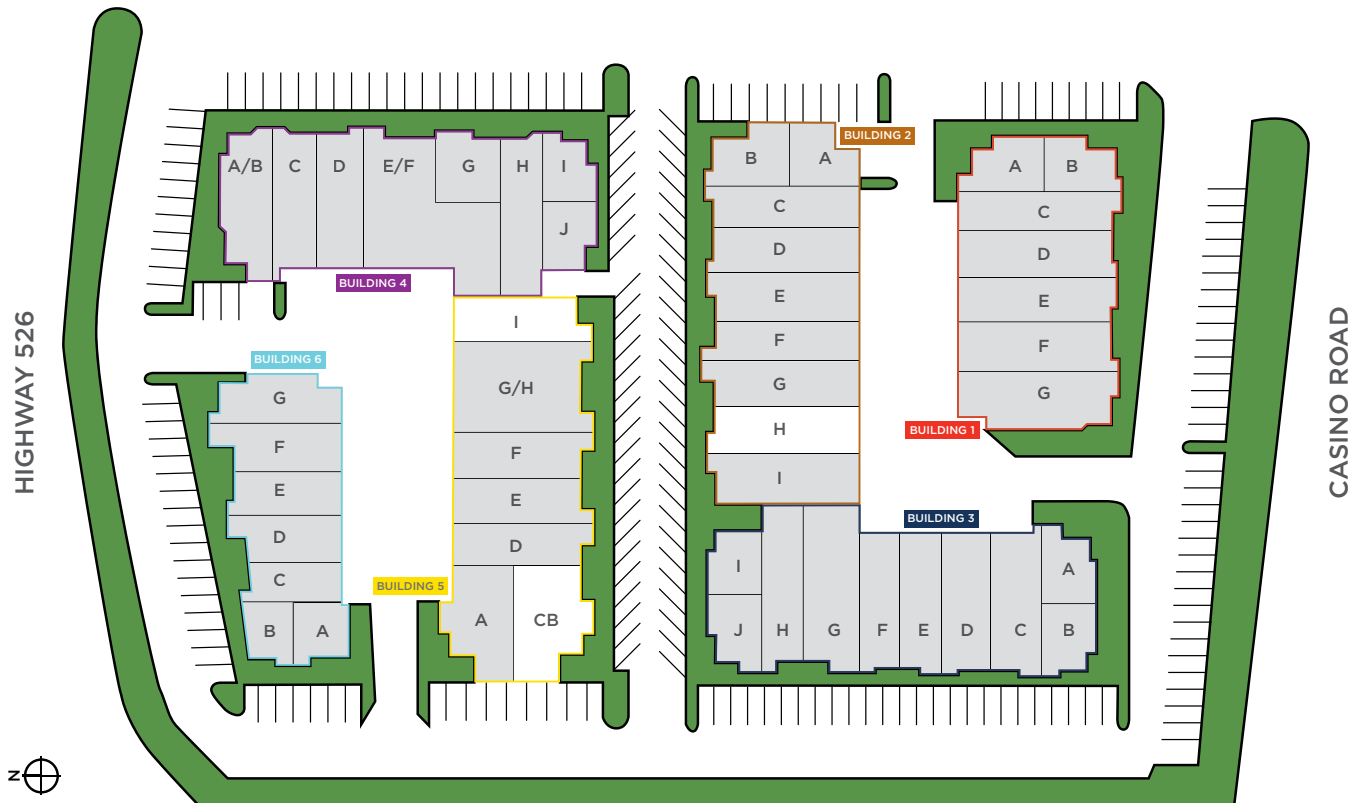
# PAINE FIELD BUSINESS PARK I

2615 WEST CASINO ROAD | EVERETT, WA 98204

CLICK ON **SUITE NUMBER** TO VIEW FLOOR PLAN

SUITE	SIZE	AVAILABILITY	BASE RENT	NNN	GROSS RENT
<u>2H</u>	<b>1,827 RSF Total</b> (629 SF Office & 1,198 SF Warehouse)	Immediately	\$1,644/mo, NNN	\$384	\$2,028
<u>5CB</u>	<b>2,091 RSF Total</b> (603 SF Office & 1,488 SF Warehouse)	60 days' notice	\$1,882/mo, NNN	\$460	\$2,342
<u>5I</u>	<b>1,839 RSF Total</b> (523 SF Office & 1,316 SF Warehouse)	Immediately	\$1,563/mo, NNN	\$374	\$1,937

## SITE PLAN



10500 NE 8th Street, Suite 900  
Bellevue, Washington 98004  
425.646.3444 • broderickgroup.com

For further information or to schedule a tour:

Tyler Slone | 425.274.4281 | slone@broderickgroup.com

Connor Gilchrist | 425.274.4286 | gilchrist@broderickgroup.com

Owned and Managed by:

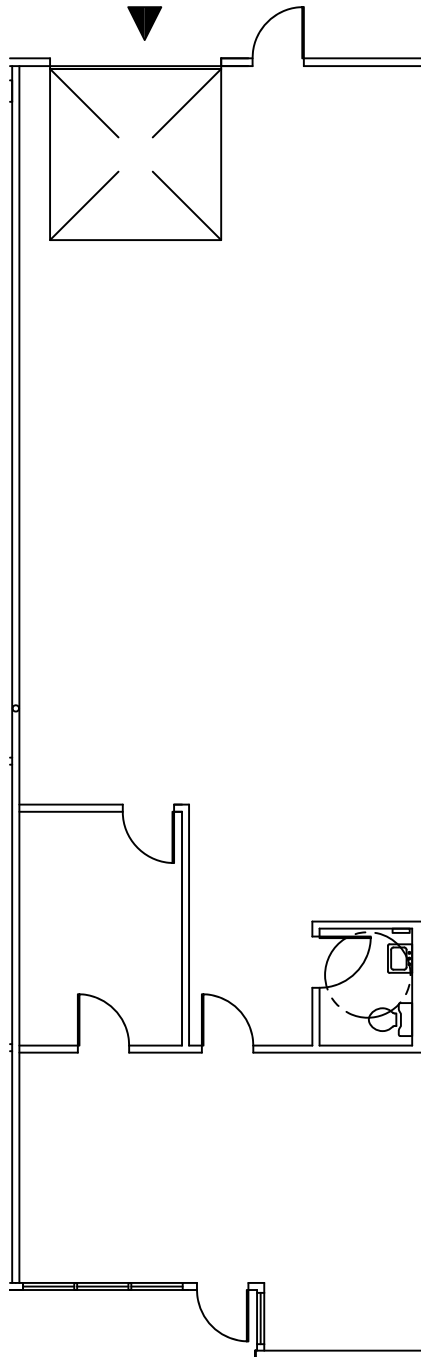


# PAINE FIELD BUSINESS PARK I

2615 WEST CASINO ROAD | EVERETT, WA 98204

## SUITE 2H

Approximately 1,827 RSF Total (629 SF Office / 1,198 SF Warehouse)



10500 NE 8th Street, Suite 900  
Bellevue, Washington 98004  
425.646.3444 • [broderickgroup.com](http://broderickgroup.com)

For further information or to schedule a tour:

**Tyler Slone** | 425.274.4281 | [slone@broderickgroup.com](mailto:slone@broderickgroup.com)

**Connor Gilchrist** | 425.274.4286 | [gilchrist@broderickgroup.com](mailto:gilchrist@broderickgroup.com)

Owned and Managed by:

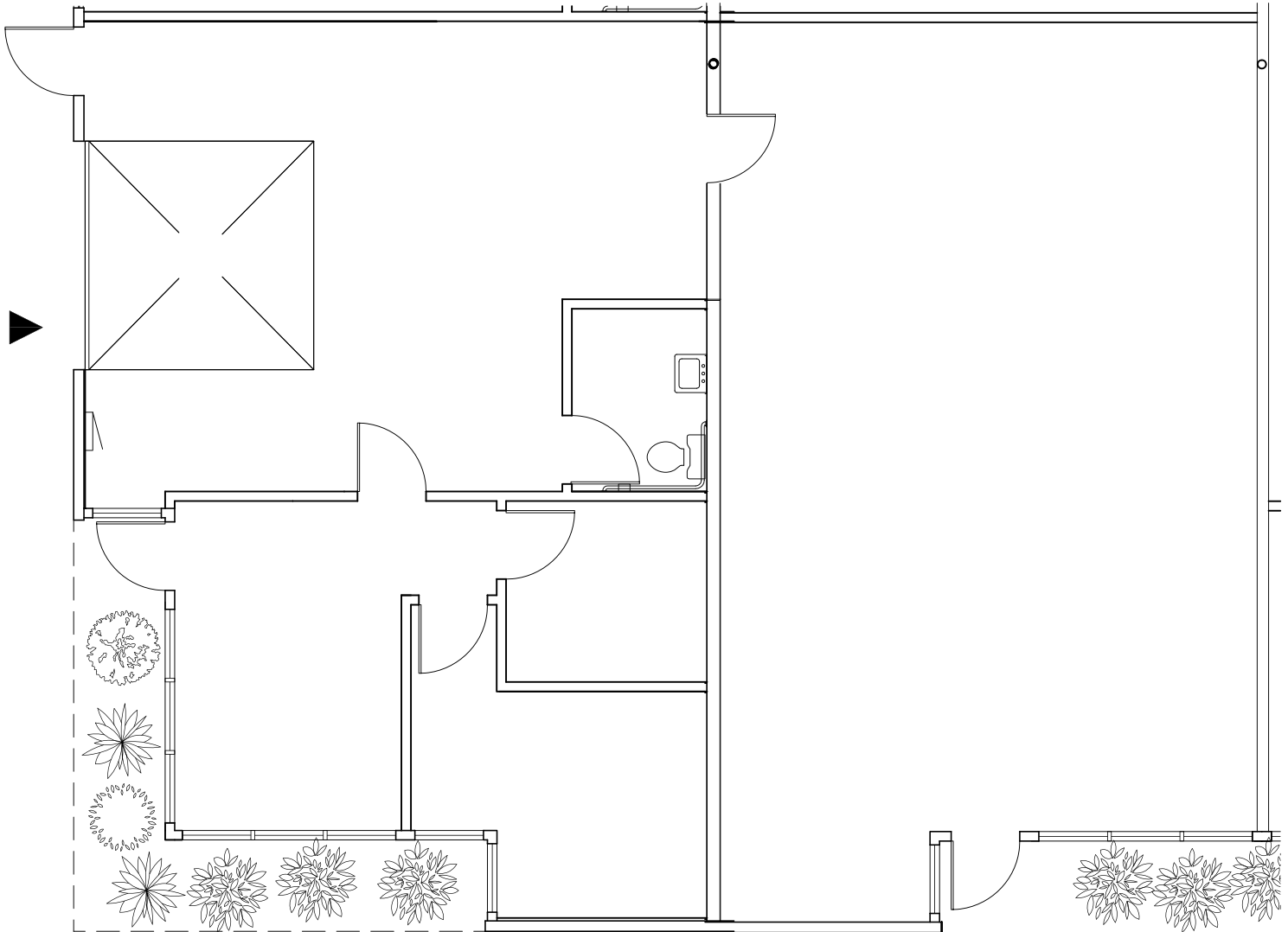


# PAINE FIELD BUSINESS PARK I

2615 WEST CASINO ROAD | EVERETT, WA 98204

## SUITE 5CB

Approximately 2,091 RSF Total (603 SF Office / 1,488 SF Warehouse)



10500 NE 8th Street, Suite 900  
Bellevue, Washington 98004  
425.646.3444 • broderickgroup.com

For further information or to schedule a tour:

**Tyler Slone** | 425.274.4281 | [slone@broderickgroup.com](mailto:slone@broderickgroup.com)

**Connor Gilchrist** | 425.274.4286 | [gilchrist@broderickgroup.com](mailto:gilchrist@broderickgroup.com)

Owned and Managed by:

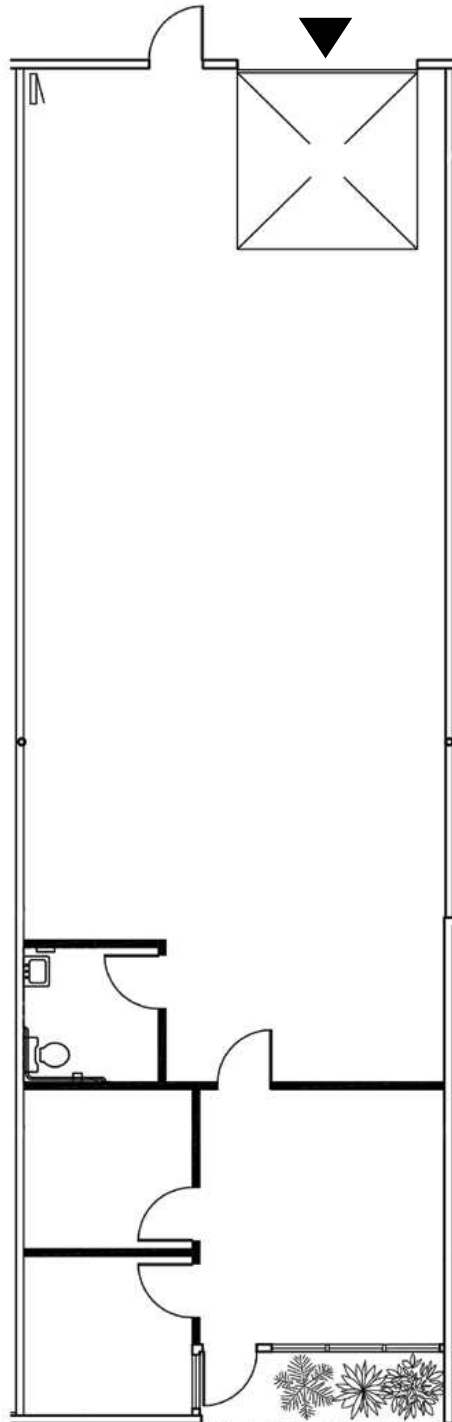


# PAINE FIELD BUSINESS PARK I

2615 WEST CASINO ROAD | EVERETT, WA 98204

## SUITE 51

Approximately 1,839 RSF Total (523 SF Office / 1,316 SF Warehouse)



10500 NE 8th Street, Suite 900  
Bellevue, Washington 98004  
425.646.3444 • [broderickgroup.com](http://broderickgroup.com)

For further information or to schedule a tour:

**Tyler Slone** | 425.274.4281 | [slone@broderickgroup.com](mailto:slone@broderickgroup.com)

**Connor Gilchrist** | 425.274.4286 | [gilchrist@broderickgroup.com](mailto:gilchrist@broderickgroup.com)

Owned and Managed by:

