

PAINE FIELD BUSINESS PARK I

2615 WEST CASINO ROAD | EVERETT, WA 98204



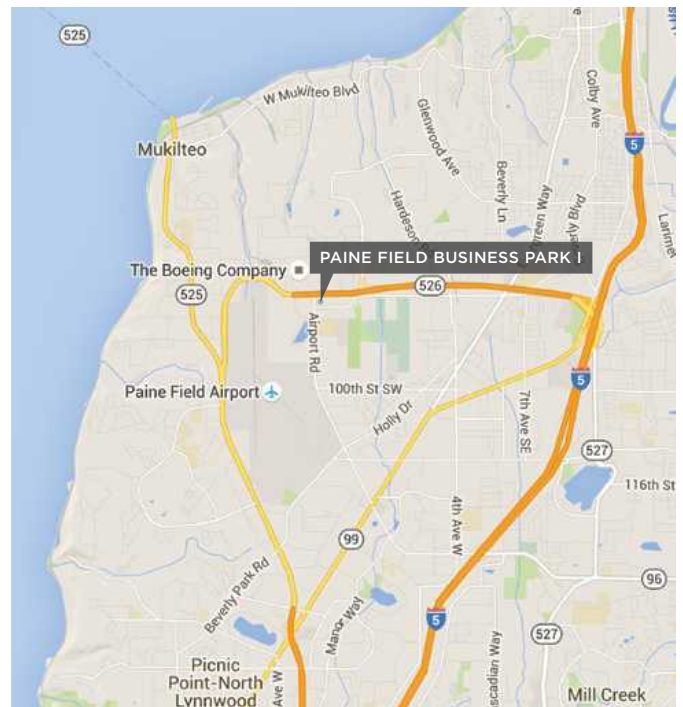
BUSINESS PARK SPACE AVAILABLE ADJACENT TO PAINE FIELD

AVAILABLE SPACE

Suites ranging from 1,827 RSF to 2,091 RSF

PROPERTY FEATURES

- High profile space catering to service companies, small businesses, sales & distribution centers
- Grade level loading
- Spaces are “move-in” condition
- Convenient South Everett location
- Across the street from Boeing 777 & 787 plant
- Direct access to SR-526 & I-5
- Restaurants and shopping center nearby



10500 NE 8th Street, Suite 900
Bellevue, Washington 98004
425.646.3444 • broderickgroup.com

For further information or to schedule a tour:

Tyler Slone | 425.274.4281 | slone@broderickgroup.com

Connor Gilchrist | 425.274.4286 | gilchrist@broderickgroup.com

Owned and Managed by:



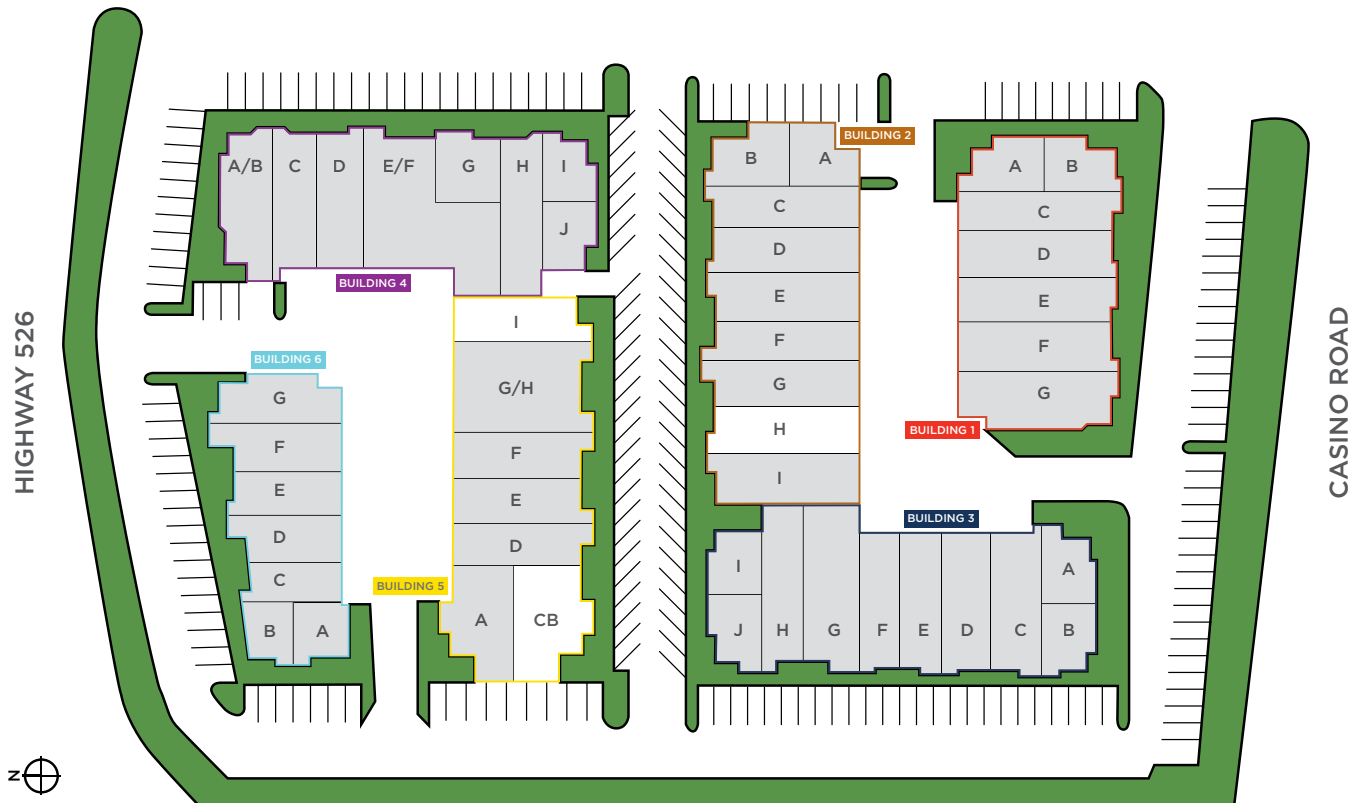
PAINE FIELD BUSINESS PARK I

2615 WEST CASINO ROAD | EVERETT, WA 98204

CLICK ON **SUITE NUMBER** TO VIEW FLOOR PLAN

SUITE	SIZE	AVAILABILITY	BASE RENT	NNN	GROSS RENT
<u>2H</u>	1,827 RSF Total (629 SF Office & 1,198 SF Warehouse)	Immediately	\$1,644/mo, NNN	\$457	\$2,101
<u>5CB</u>	2,091 RSF Total (603 SF Office & 1,488 SF Warehouse)	Immediately	\$1,882/mo, NNN	\$523	\$2,405
<u>5I</u>	1,839 RSF Total (523 SF Office & 1,316 SF Warehouse)	Immediately	\$1,563/mo, NNN	\$460	\$2,023

SITE PLAN



10500 NE 8th Street, Suite 900
Bellevue, Washington 98004
425.646.3444 • broderickgroup.com

For further information or to schedule a tour:

Tyler Slone | 425.274.4281 | slone@broderickgroup.com

Connor Gilchrist | 425.274.4286 | gilchrist@broderickgroup.com

Owned and Managed by:

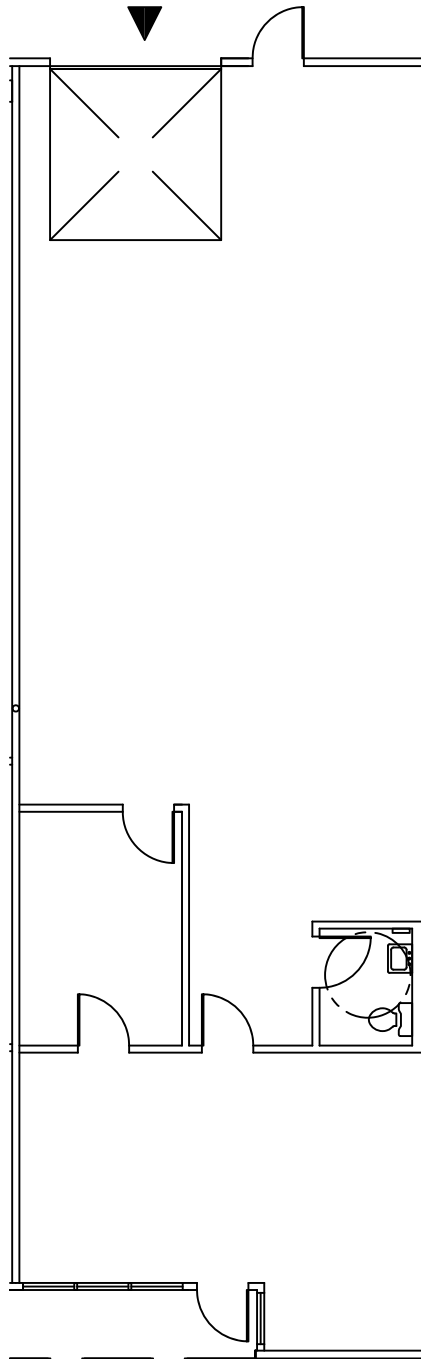


PAINE FIELD BUSINESS PARK I

2615 WEST CASINO ROAD | EVERETT, WA 98204

SUITE 2H

Approximately 1,827 RSF Total (629 SF Office / 1,198 SF Warehouse)



10500 NE 8th Street, Suite 900
Bellevue, Washington 98004
425.646.3444 • broderickgroup.com

For further information or to schedule a tour:

Tyler Slone | 425.274.4281 | slone@broderickgroup.com

Connor Gilchrist | 425.274.4286 | gilchrist@broderickgroup.com

Owned and Managed by:

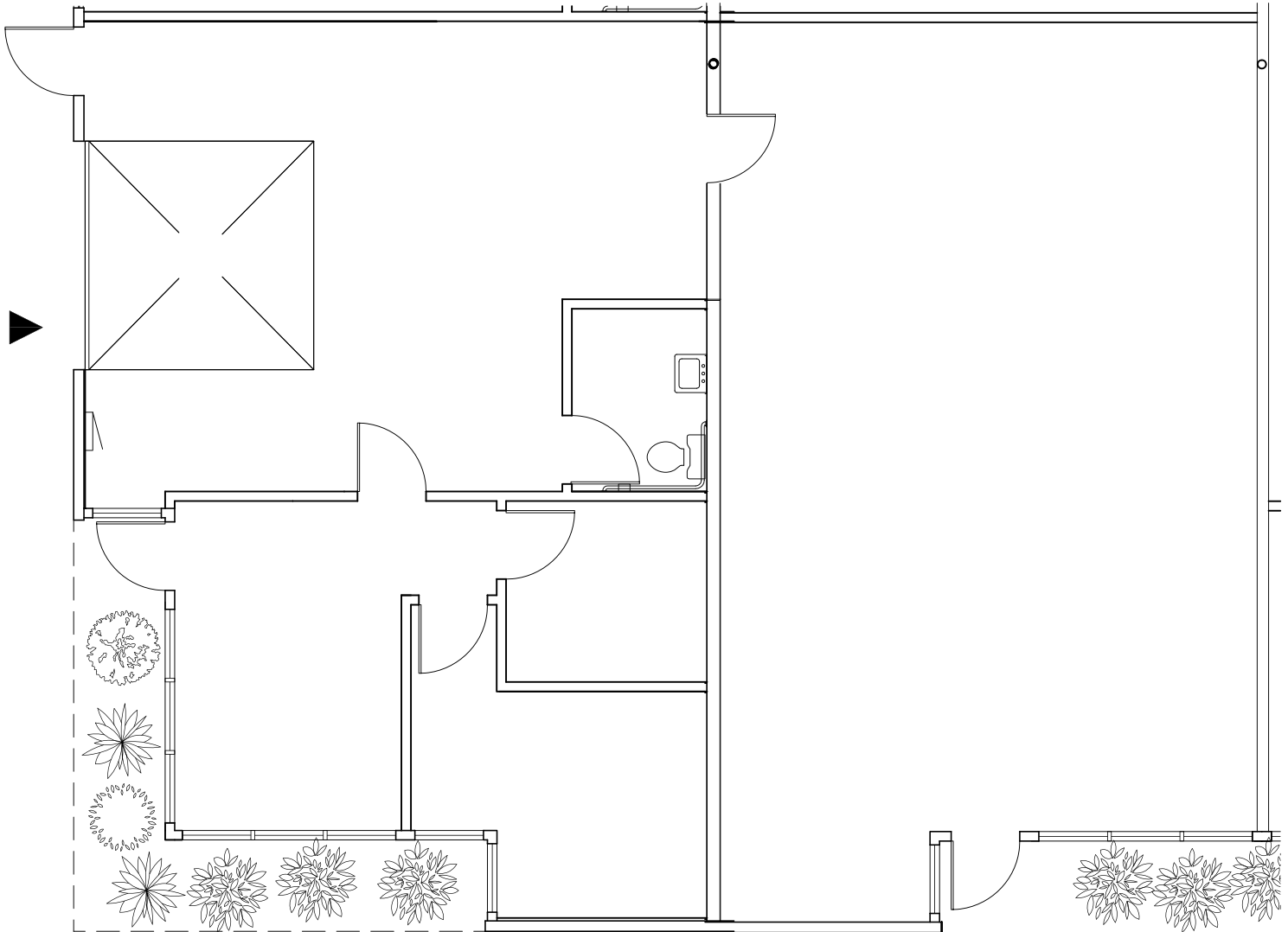


PAINE FIELD BUSINESS PARK I

2615 WEST CASINO ROAD | EVERETT, WA 98204

SUITE 5CB

Approximately 2,091 RSF Total (603 SF Office / 1,488 SF Warehouse)



10500 NE 8th Street, Suite 900
Bellevue, Washington 98004
425.646.3444 • broderickgroup.com

For further information or to schedule a tour:

Tyler Slone | 425.274.4281 | slone@broderickgroup.com

Connor Gilchrist | 425.274.4286 | gilchrist@broderickgroup.com

Owned and Managed by:

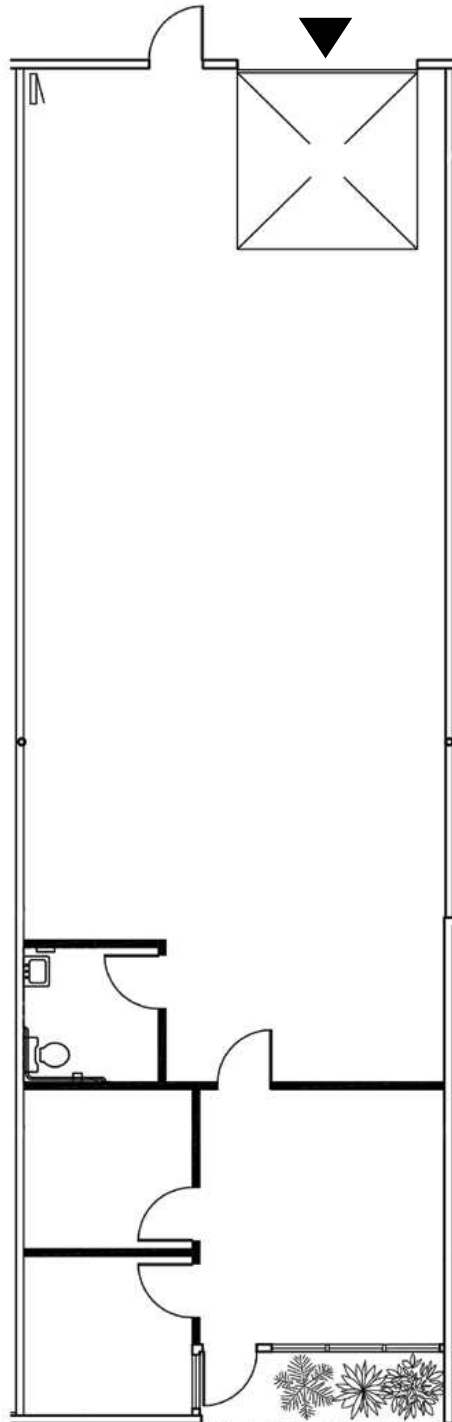


PAINE FIELD BUSINESS PARK I

2615 WEST CASINO ROAD | EVERETT, WA 98204

SUITE 51

Approximately 1,839 RSF Total (523 SF Office / 1,316 SF Warehouse)



10500 NE 8th Street, Suite 900
Bellevue, Washington 98004
425.646.3444 • broderickgroup.com

For further information or to schedule a tour:

Tyler Slone | 425.274.4281 | slone@broderickgroup.com

Connor Gilchrist | 425.274.4286 | gilchrist@broderickgroup.com

Owned and Managed by:

