

FOR LEASE



Laura Miller
[206] 351.3573 | MOBILE
laura@gibraltarus.com

Ananda Gellock
[206] 707.3259 | MOBILE
ananda@gibraltarus.com

Gibraltar LLC
206.367.6087 | FAX
www.gibraltarus.com

Squire Park Plaza 1706-1720 South Jackson Street | Seattle



Suite 1706



Suite 1720

Overview

Located between the intersection of 17th Ave and 18th, fronting South Jackson Street, Squire Park Plaza is a mixed-use project located in Seattle's Central District. Comprised of retail, office, commercial lofts, and apartments, this opportunity is situated at a gateway location - near to many of Seattle's most vibrant neighborhoods. The Plaza is within a 2 ½ mile radius of Downtown Seattle and the International District, Capitol Hill, First Hill and Beacon Hill neighborhoods. This convenient location provides street level tenants easy access to public transportation and strong exposure from its setting on a major urban neighborhood arterial.

Building Highlights

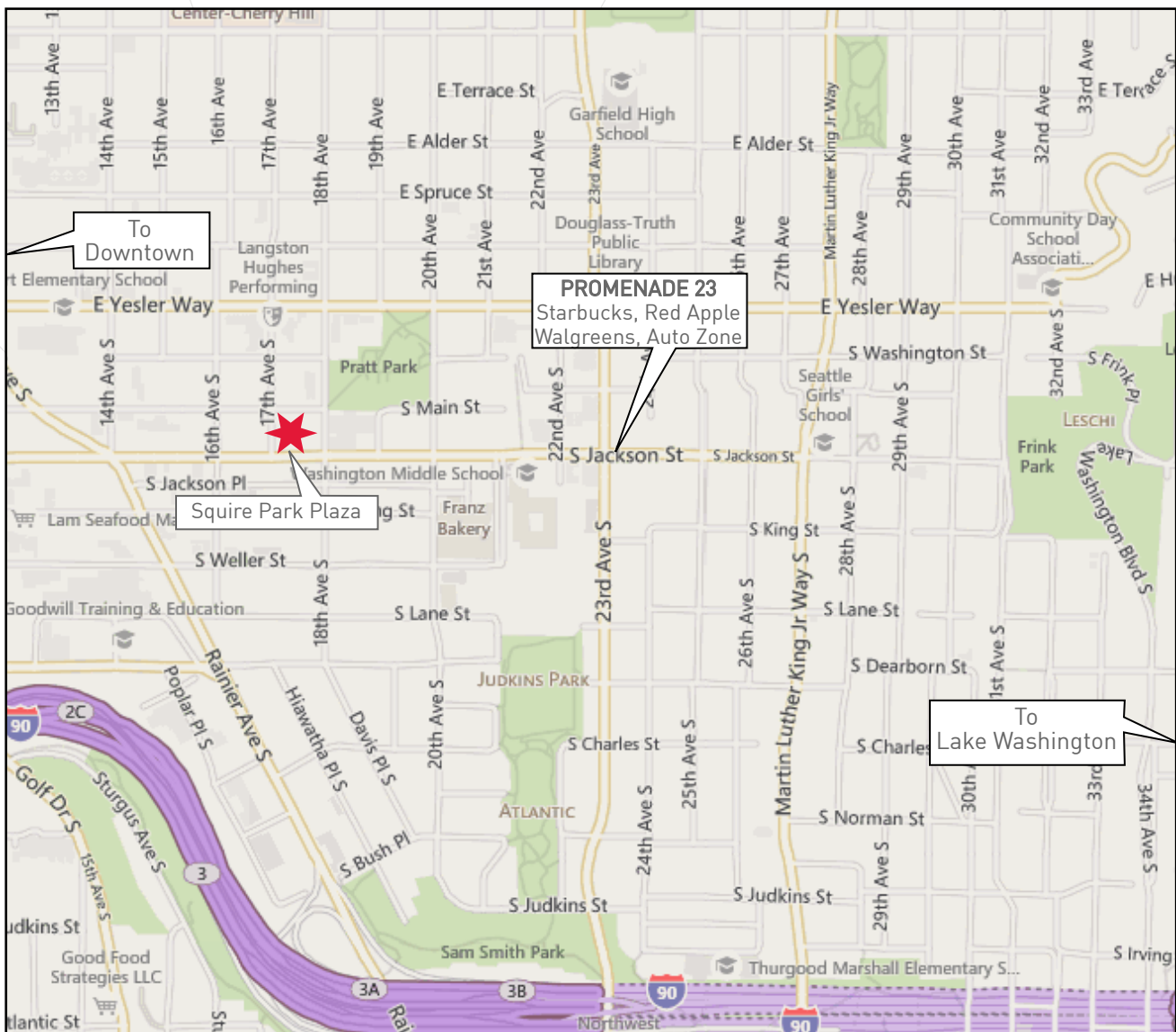
- High-quality mixed-use apartment building constructed in 2007 consists of 60 residential units and 10,000 SF of retail and office
- Excellent visibility from S Jackson Street, with easy access to public transportation, freeway access and downtown Seattle
- Co-tenants include two neighborhood cafes
- Ideal for neighborhood market, office, retail, art gallery or fitness use
- Excellent signage opportunity
- Parking: Easy access to street parking and secure garage parking available to lease at \$75/mo/stall
- Available Immediately

Retail Availability

Available Space	SF	Base Rent per SF	NNN	Total Monthly Rent	Description
Suite 1706	1,228	\$17.50/SF	\$7.00/SF	\$2,507	Currently in shell condition. Landlord will build out the space
Suite 1720	984	\$25.00/SF	\$7.00/SF	\$2,624	Corner location, existing build out is market/grocery, large storefront windows, 14'10" ceilings
Suite 201	1,905	\$16.00/SF	\$7.00/SF	\$3,651	Second floor office with secure building entry

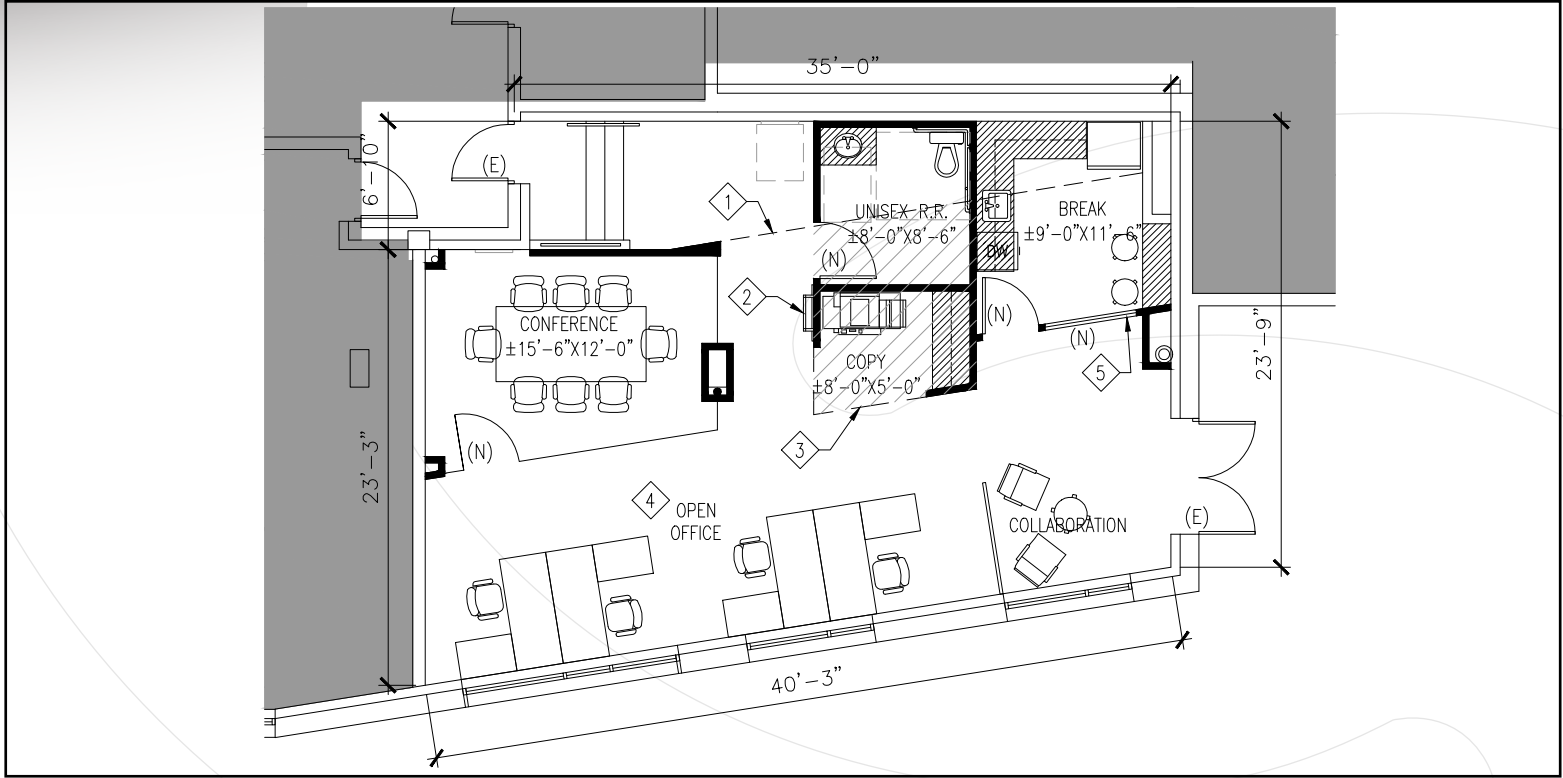
Squire Park Plaza 1706-1720 South Jackson Street | Seattle

Demographics (2014)	1 mile	3 mile	5 mile
Daytime Population	38,049	369,431	618,120
Total Households	13,167	80,753	170,401
Average Household Income	\$65,772	\$74,346	\$81,375

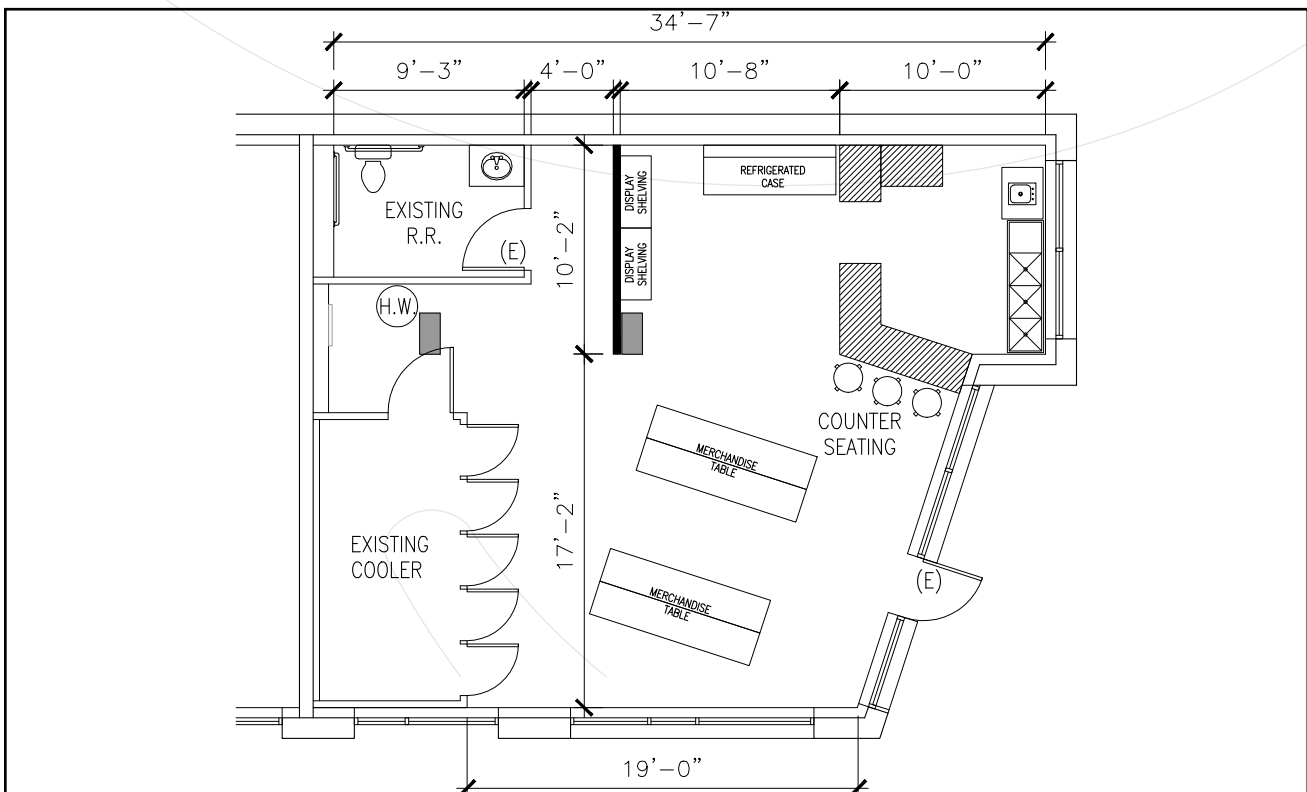


Squire Park Plaza 1706-1720 South Jackson Street | Seattle

Suite 1706 (SAMPLE LAYOUT)



Suite 1720 (EXISTING BUILD OUT)



Squire Park Plaza 1706-1720 South Jackson Street | Seattle

Suite 201 (SAMPLE LAYOUT)

