

NEW SPACES!

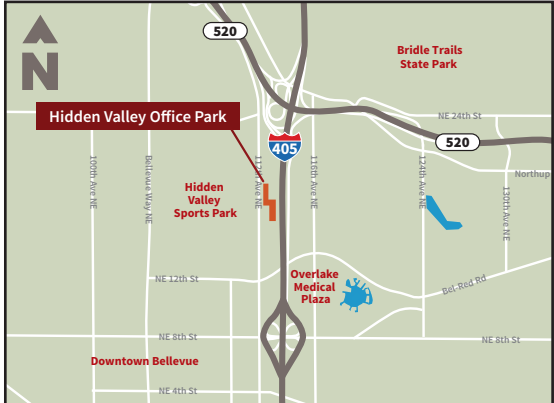


Hidden Valley Office Park

1750 112th Ave NE | Bellevue, WA 98004

UPGRADED COMMON AREAS

- New Tiled Entryways
- Renovated Bathrooms
- Updated Lighting
- New Carpeting
- Repainted Hallways
- Upgraded Elevators



BUILDING A AVAILABLE SPACE:

- Suite A-203 | 1,799 RSF \$28.50/RSF, Full Service Available March 1, 2015

BUILDING C AVAILABLE SPACE:

PLUG & PLAY FURNITURE AVAILABLE

- Suite C-242 | 2,318 RSF \$28.50/RSF, Full Service Available Immediately

▪ Suite C-250 | 2,959 RSF → **LEASED!**

BUILDING D AVAILABLE SPACES

- Suite D-155 | 2,728 RSF \$28.50/RSF, Full Service Available March 1, 2015
- Suite D-149 | 1,830 RSF \$27.00/RSF, Full Service Available Immediately

BUILDING FEATURES

- Full Service Deli with Seating
- Gym with Showers
- Conference Room
- Property Management Onsite
- 4.0/1,000 SF Parking
- Covered Parking Available

Comcast is Available **BUSINESS CLASS**

tw telecom. Fiber Optics is Available



Dan Krekel, CCIM
dkrekel@leibsohn.com | (425) 586-4655



The information contained herein has been received from sources we deem reliable. While we have no reason to doubt its accuracy, we do not guarantee it. You are advised to independently verify all information.

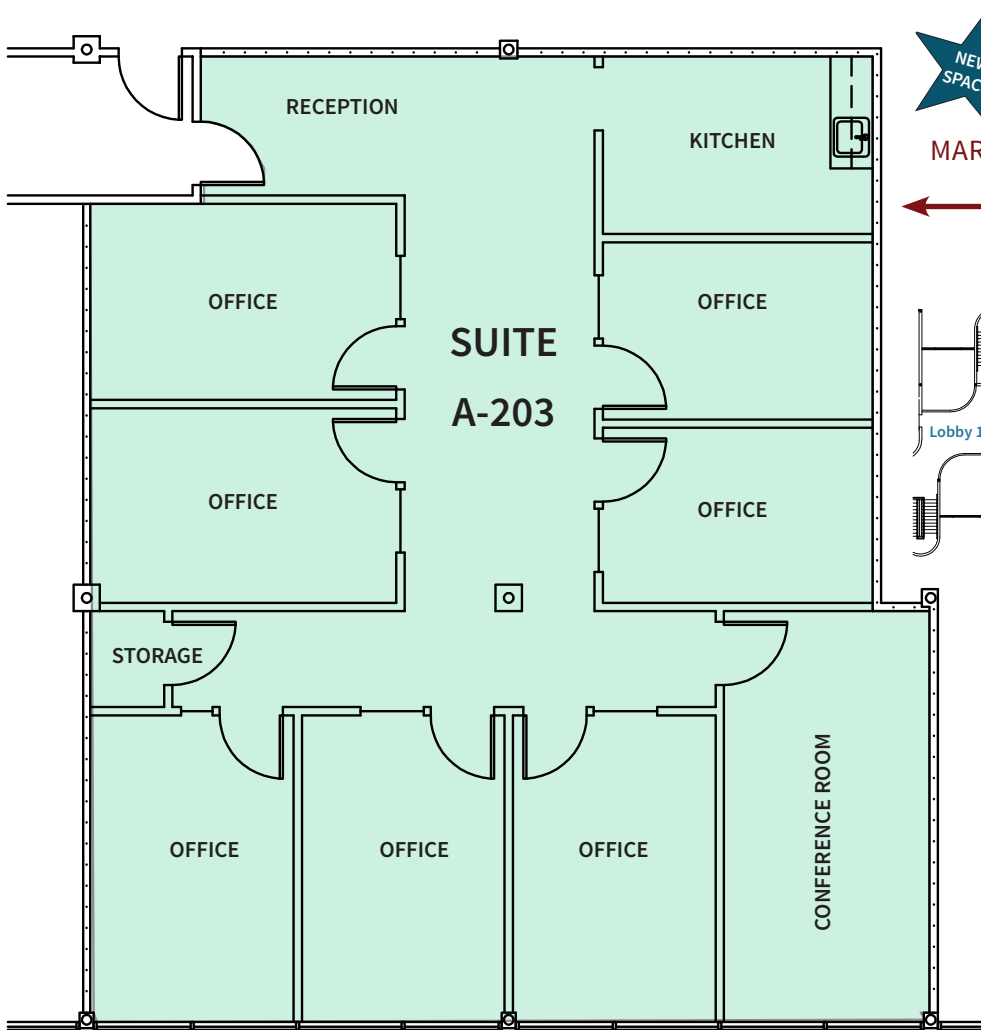
Hidden Valley Office Park

1750 112th Ave NE | Bellevue, WA 98004

UPGRADED COMMON AREAS

- New Tiled Entryways
- Renovated Bathrooms
- Updated Lighting
- New Carpeting
- Repainted Hallways
- Upgraded Elevators

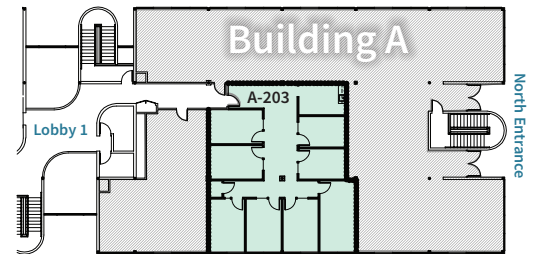
BUILDING A: 1,799 RSF AVAILABLE



MARKET-READY | AVAILABLE 3/1/2015



SUITE A-203 1,799 RSF
\$28.50/RSF, Full Service



Dan Krekel, CCIM
dkrekel@leibsohn.com | (425) 586-4655



Hidden Valley Office Park

1750 112th Ave NE | Bellevue, WA 98004

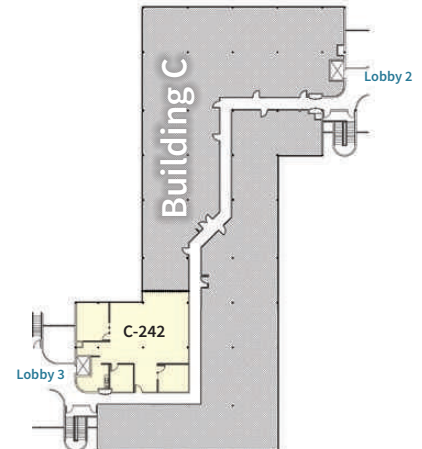
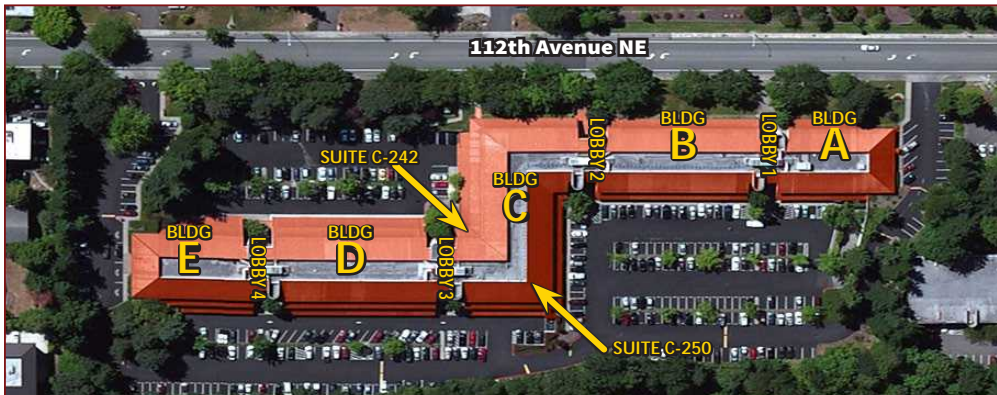
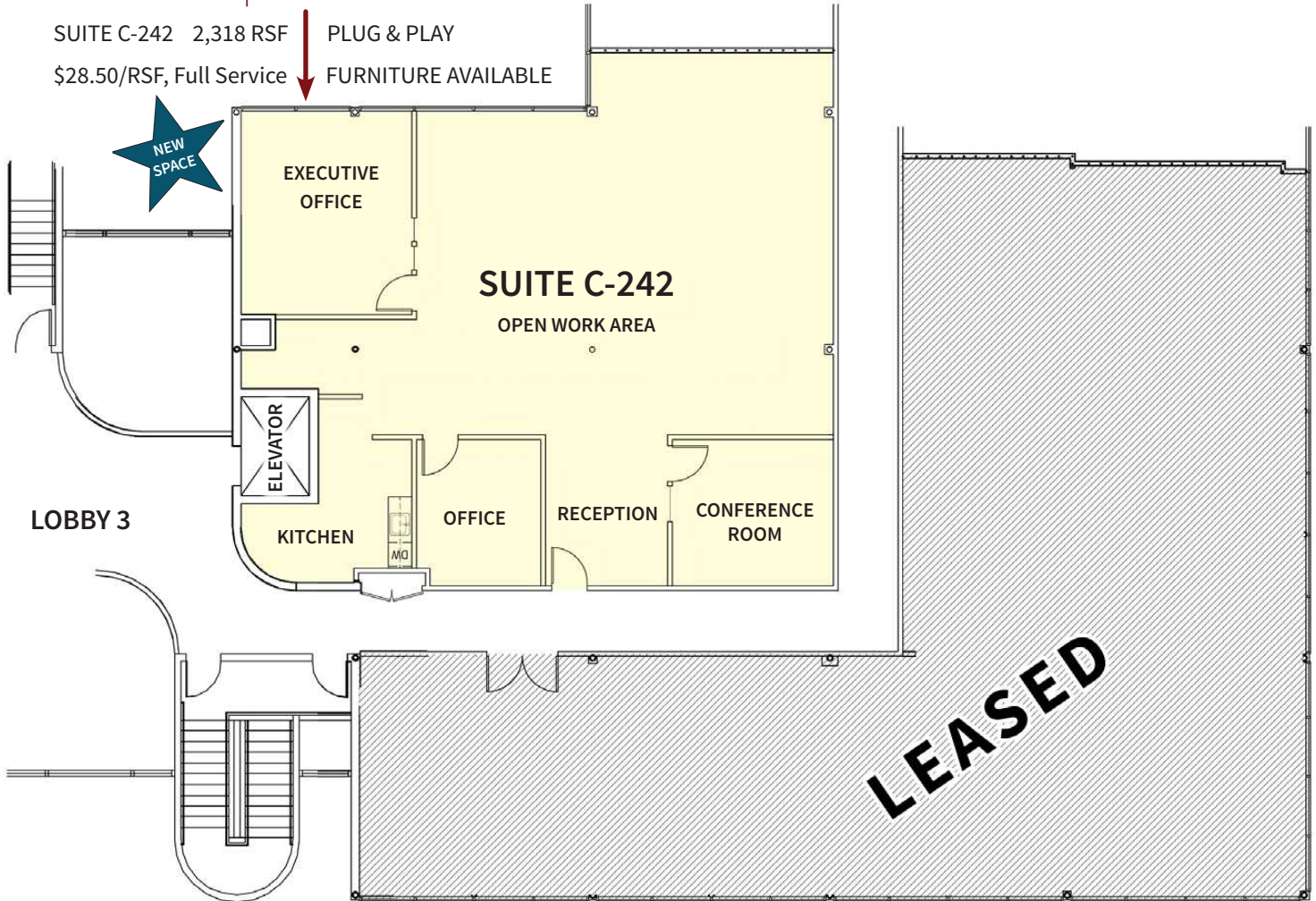
UPGRADED COMMON AREAS

- New Tiled Entryways
- Renovated Bathrooms
- Updated Lighting
- New Carpeting
- Repainted Hallways
- Upgraded Elevators

BUILDING C: 2,318 RSF AVAILABLE

MARKET-READY | AVAILABLE IMMEDIATELY

SUITE C-242 2,318 RSF | PLUG & PLAY
\$28.50/RSF, Full Service | FURNITURE AVAILABLE



Dan Krekel, CCIM
dkrekel@leibsohn.com | (425) 586-4655



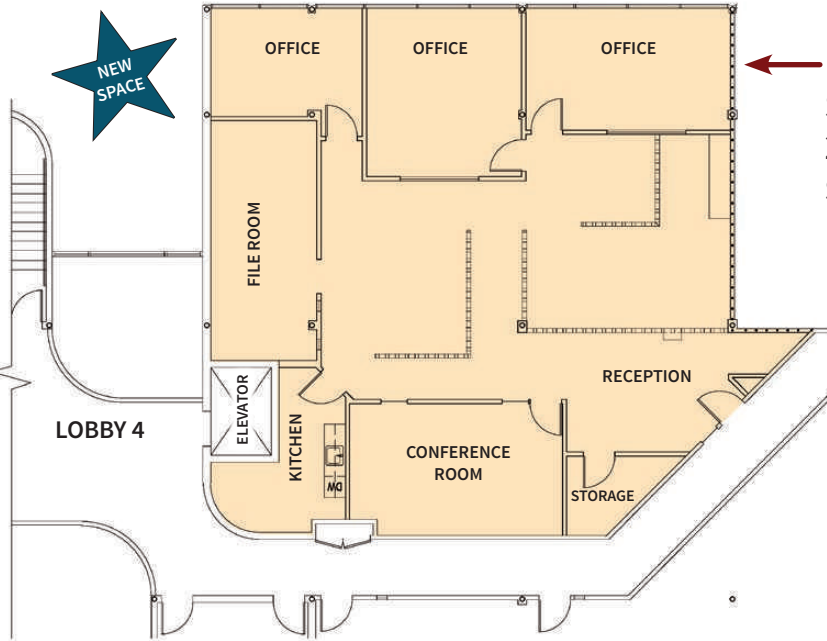
Hidden Valley Office Park

1750 112th Ave NE | Bellevue, WA 98004

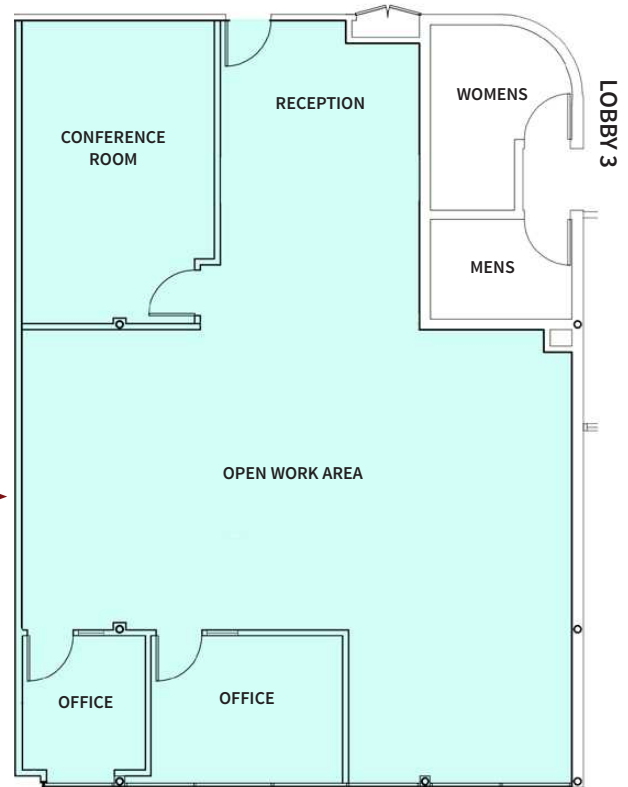
UPGRADED COMMON AREAS

- New Tiled Entryways
- Renovated Bathrooms
- Updated Lighting
- New Carpeting
- Repainted Hallways
- Upgraded Elevators

BUILDING D: 4,558 RSF AVAILABLE

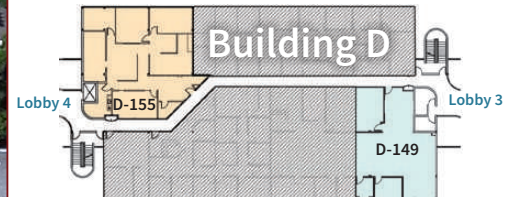
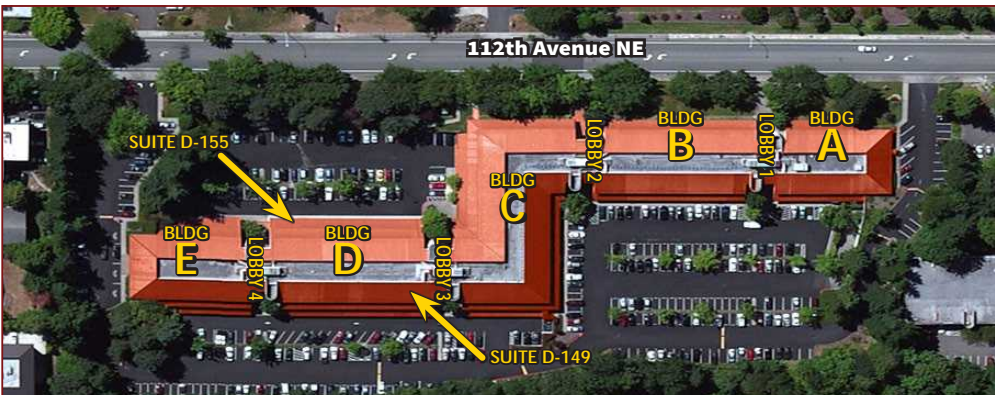


MARKET-READY | AVAILABLE MARCH 1, 2015
SUITE D-155
2,728 RSF
\$28.50/RSF, Full Service



MARKET-READY | AVAILABLE IMMEDIATELY

SUITE D-149
1,830 RSF
\$27.00/RSF, Full Service



Dan Krekel, CCIM
dkrekel@leibsohn.com | (425) 586-4655

