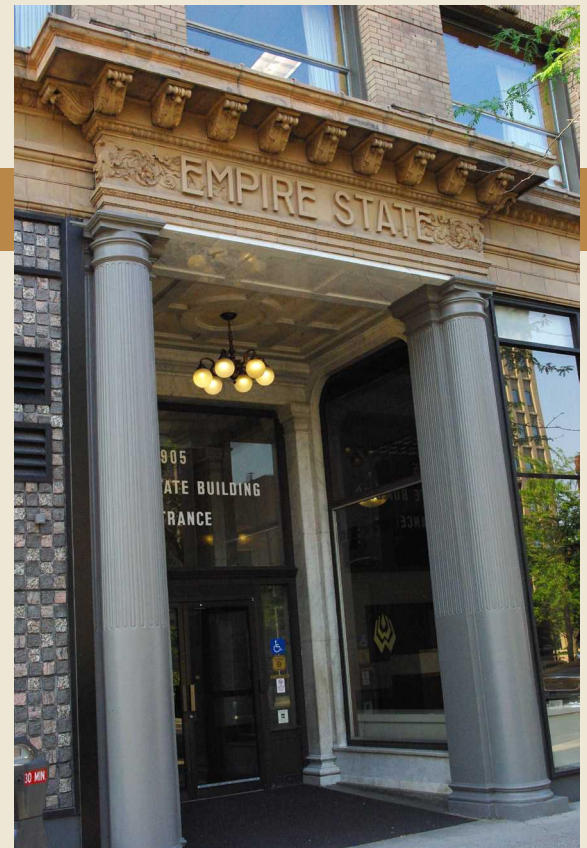


# EMPIRE STATE BUILDING

905 W RIVERSIDE AVENUE • SPOKANE, WA 99201



The Empire State Building is a charming building with character located in the heart of Downtown Spokane. The property is directly across from the Federal Building and Post Office, and is only one block from Riverpark Square. This office building offers classic views of downtown and is within walking distance of Riverfront Park.



## PROPERTY INFORMATION

- Historic Building of Class and Character
- Full Service Rents
- Prime Downtown Location
- Building Conference Room
- Building Lounge/Break Room
- 24/7 Secured Access
- On-site Deli and Coffee Shop
- Tenant Improvement Allowance Available

For more information,  
please contact: Alicia Barbieri  
(509) 344-4902  
abarbieri@g-b.com



**GOODALE  
& BARBIERI**  
COMPANY SINCE 1937

818 W. Riverside, Suite 300  
Spokane, WA 99201  
(509) 459-6109  
www.G-B.com

**Warranty.** Goodale and Barbieri Company does not guarantee, warrant, either expressed or implied, any information and/or figures supplied by the Seller. Buyer should rely on his own verification of this information as a part of his or her own due diligence.

**Copyright Complaints.** We respect the intellectual property of others. If you believe that your work has been copied in a way that constitutes copyright infringement please contact us immediately at the address or phone number listed above.

# EMPIRE STATE BUILDING

905 W RIVERSIDE AVENUE • SPOKANE, WA 99201



## AVAILABILITY

<b>SUITE 101</b>	\$2,800/Month	1,845 SF - Retail/Office Space on Lincoln, Great Visibility and Signage Opportunities, Currently Configured for Bank Use, T.I. Allowance Negotiable
<b>SUITE 214</b>	\$350/Month	1 Private Office, 1 Semi-Private Office
<b>SUITE 304</b>	\$985/Month	2 Private Offices, Open Reception/Work Area
<b>SUITE 311</b>	\$3,860/Month	2,810 SF - 5 Private Offices, Open Work Station Area, File/Copy Room, Reception, Kitchenette, T.I.'s Available (Demisable)
<b>SUITE 401</b>	\$1,225/Month	1,040 SF - Large Open Work Area, Kitchenette, Hard Wood Floors, Large Picturesque
<b>SUITE 603</b>	\$350/Month	1 Private Office and Small Reception, Great Views

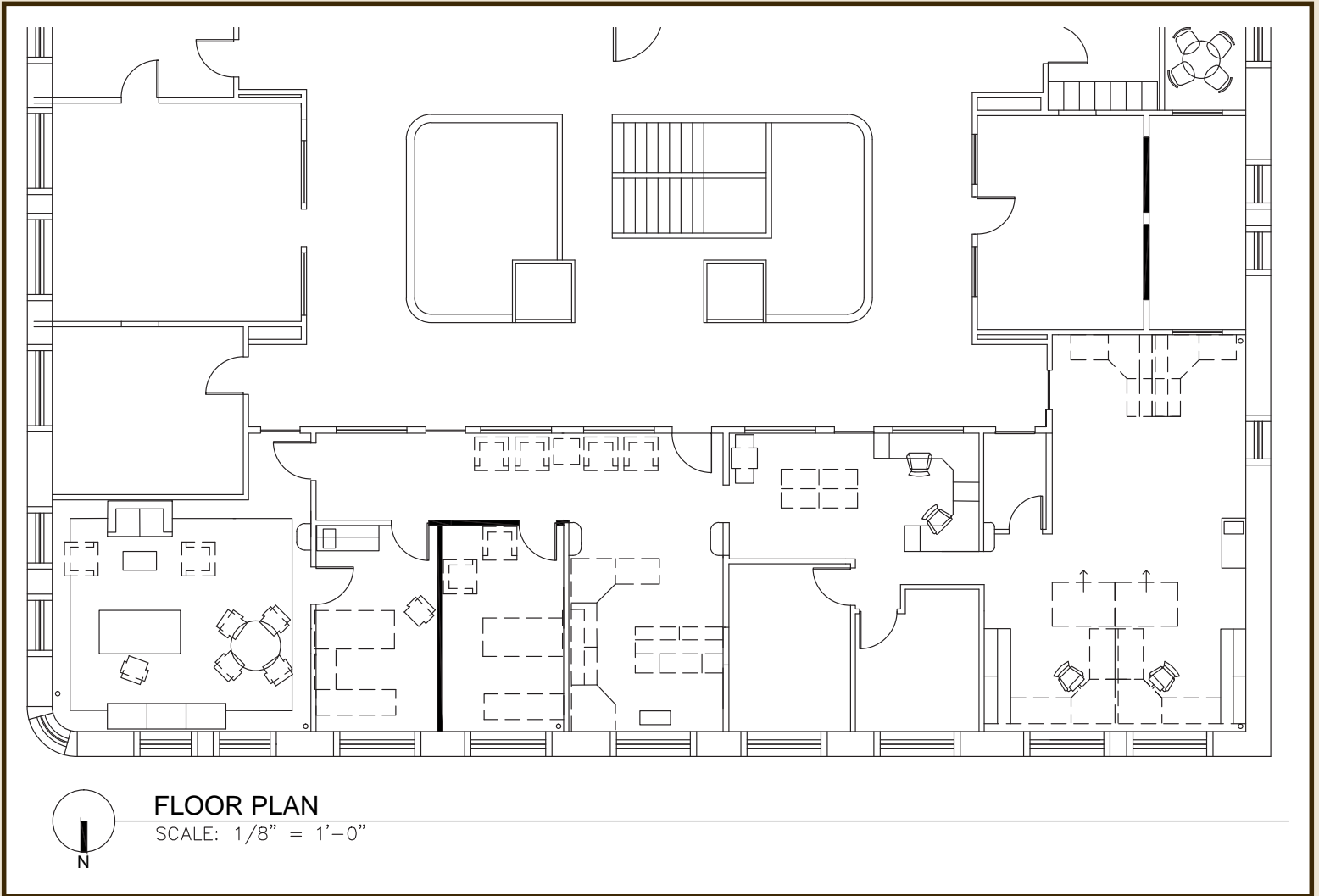
**Alicia Barbieri**  
(509) 344-4902  
abarbieri@g-b.com



# EMPIRE STATE BUILDING

905 W RIVERSIDE AVENUE • SPOKANE, WA 99201

## SUITE 311 FLOOR PLAN

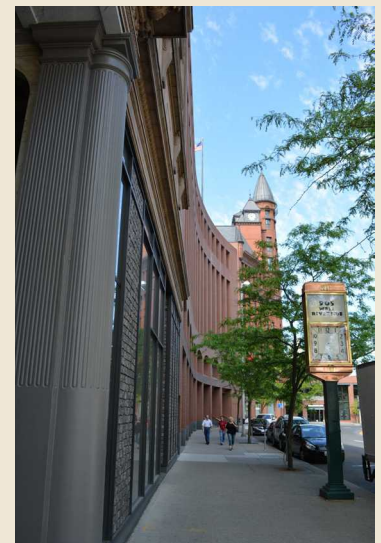


Alicia Barbieri  
(509) 344-4902  
abarbieri@g-b.com



# EMPIRE STATE BUILDING

905 W RIVERSIDE AVENUE • SPOKANE, WA 99201



Alicia Barbieri  
 (509) 344-4902  
 abarbieri@g-b.com



818 W. Riverside, Suite 300 - Spokane, WA 99201 - (509) 459-6109 - www.G-B.com