

BUSINESS FOR SALE

WATSON'S COUNTER

BALLARD PUBLIC LOFTS

6420 24th Ave NW, Seattle, WA 98107

NEW PRICE!

198,000



For more information please contact:

LAURA MILLER

laura@gibraltarusa.com

206.351.3573

SAM BENTON

samb@gibraltarusa.com

312.550.8825



6420 24TH AVE NW, SEATTLE, WA 98107

WATSON'S COUNTER



PROPERTY HIGHLIGHTS

- Rare opportunity to acquire a turn-key restaurant located at the base of Ballard Public Lofts, a mixed-use building comprised of 99 loft units above a community focused, activated retail plaza on the ground level
- Modern, light-filled space features 14 foot type 1 hood, walk-in cooler, large operable storefront windows, concrete floors
- Ideal for day-time restaurant or bakery. Beer and wine sales allowed, liquor prohibited
- Building co-tenants are Copine and Single Hill Brewing
- 13 shared garage parking stalls for retail tenants
- Inside seating available up to 70
- 2,682 Sq Ft
- HVAC
- Currently Monthly Rate \$6,907.15 plus 2024 NNN (\$2,326.64) = \$9,233.79. Long term lease available



43

TRANSIT SCORE



84

WALK SCORE



91

BIKE SCORE



92,205

TOTAL POPULATION



43,215

TOTAL HOUSEHOLDS



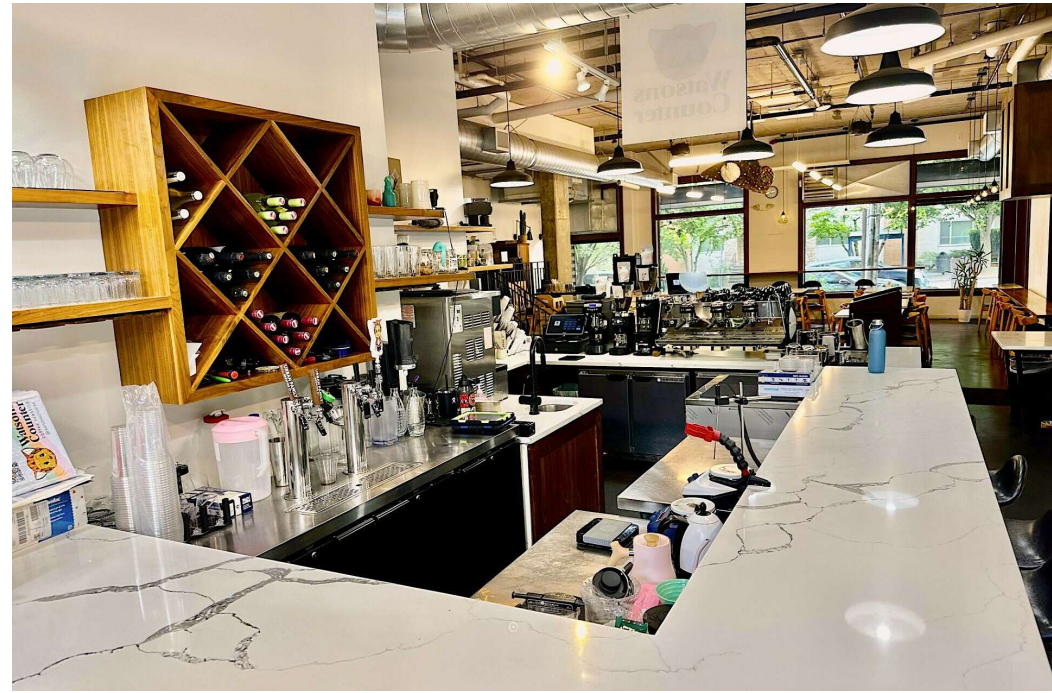
\$121,892

MEDIAN INCOME

* Estimated 2023 Demographics based on a 2 mile radius

6420 24TH AVE NW, SEATTLE, WA 98107

WATSON'S COUNTER



This information has been obtained from sources believed reliable. No guarantee, warranty or representation, express or implied, is made as to the accuracy of the information contained herein, and same is submitted subject to errors, omissions, change of price, rental or other conditions withdrawal without notice, and to any special listing conditions, imposed by our principals. Any projections, opinions, assumptions or estimates used are for example only and do not represent the current or future performance of the property.

WATSON'S COUNTER



24th Ave, NW

WATSON'S COUNTER

