



BUSINESS OPPORTUNITY

9823 15TH AVENUE SW ♦ SEATTLE, WA 98106

Neighborhood Donuts shop in White Center is for Sale!

Regularly mentioned on many "Best Donuts Shop List".

Turnkey Bakery built out with Type 1 hood.

Been a donut shop for almost 30 years at this location.

Please do not disturb the employees.

Please contact the Broker for tours.



Are you dreaming of owning your own successful donut shop in a lively and diverse neighborhood? Look no further than Good Day Donuts in White Center! This well-established and profitable business is now available for sale, offering an incredible opportunity for aspiring entrepreneurs and donut enthusiasts alike.

Julie Shizukuishi

(206) 283-5212

www.wccommercialrealty.com



DISCLAIMER: The above information has been secured from sources believed to be reliable, however, no representations are made to its accuracy. Prospective tenants or buyers should consult their professional advisors and conduct their own independent investigation. Site plan and configuration are subject to change. Properties are subject to change in price and/or availability without notice. West Coast Commercial Realty, LLC

WCCR

West Coast Commercial Realty



BUSINESS OPPORTUNITY

9823 15TH AVENUE SW ♦ SEATTLE, WA 98106



This is an incredible opportunity to acquire a thriving donut shop in a prime location with a loyal customer base and proven profitability. Don't miss your chance to become a part of the White Center community and take this successful business to new heights.

Serious inquiries only. Contact the broker to learn more about this exciting business opportunity and to arrange a confidential viewing. Embrace your entrepreneurial spirit and make every day a Good Day with Good Day Donuts in White Center!

Key Features:

- **Prime Location:** Good Day Donuts is ideally situated in the heart of White Center, a vibrant and rapidly growing community known for its eclectic mix of residents and thriving local businesses. With an excellent visibility by the Rapid Bus line to Seattle, this location is a recipe for success.
- **Established Brand and Customer Base:** Over the years, Good Day Donuts has become a beloved institution in the neighborhood, attracting a loyal customer base that appreciates the quality and flavor of our handcrafted donuts. Our strong brand reputation and positive online reviews provide a solid foundation for continued growth.
- **Impressive Revenue:** Good Day Donuts has consistently generated impressive revenue, with year-over-year growth. The business has multiple revenue streams, including in-store sales, online orders, catering services, and partnerships with local events.
- **Turnkey Operation:** As the new owner, you'll benefit from a fully equipped and well-maintained facility. Our professional kitchen equipment, display cases, and comfortable seating area are all included, ensuring a smooth transition and minimal downtime.
- **Creative Freedom and Expansion Opportunities:** Good Day Donuts offers plenty of room for expansion and innovation. You can explore new flavors, introduce specialty items, or even extend operating hours to maximize revenue potential. The business has enormous growth potential with the right vision and marketing strategies.

Julie Shizukuishi

(206) 283-5212

www.wccommercialrealty.com



DISCLAIMER: The above information has been secured from sources believed to be reliable, however, no representations are made to its accuracy. Prospective tenants or buyers should consult their professional advisors and conduct their own independent investigation. Site plan and configuration are subject to change. Properties are subject to change in price and/or availability without notice. West Coast Commercial Realty, LLC

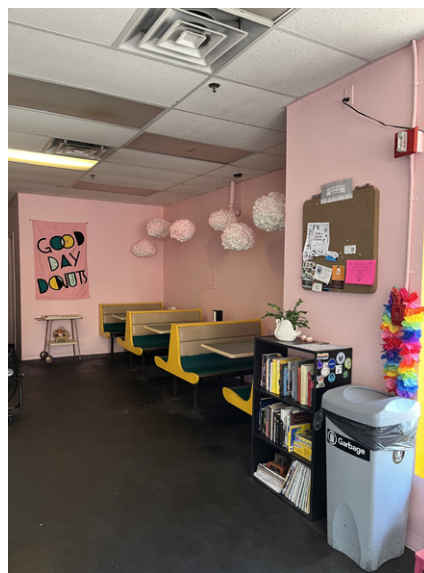
WCCR

West Coast Commercial Realty



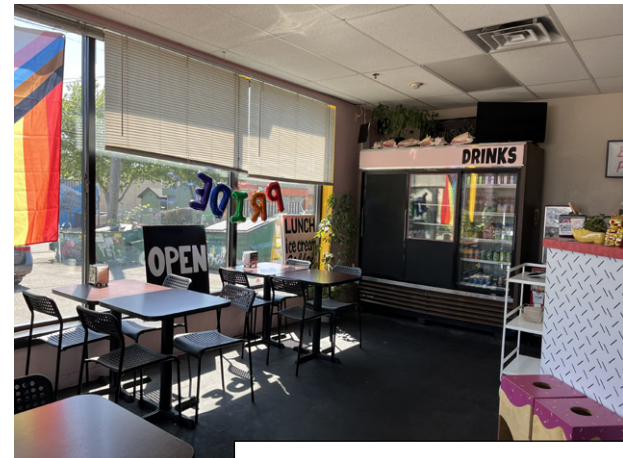
BUSINESS OPPORTUNITY

9823 15TH AVENUE SW ♦ SEATTLE, WA 98106



Equipment List:

- 1 - full Belshaw Donut Machine (fryer, proofer, glazer, froster)
- 1 - 3 door stand up fridge
- 1 - Ice Cream case (8 holes)
- 1 - 2 door under counter fridge
- 1 - 30 quart Hobart mixer
- 1 - Upright freezer
- 1 - 3 compartment sink
- 1 - prep sink w/ ledge
- 1 - 1 door sandwich top fridge unit
- 1 - hood type 1
- 1 - espresso machine (2 group)
- 1 - espresso grinder
- 1 - gas 6-burner stove with full size oven
- 1 - single full size convection oven (brand new)



Julie Shizukuishi

(206) 283-5212

www.wccommercialrealty.com



DISCLAIMER: The above information has been secured from sources believed to be reliable, however, no representations are made to its accuracy. Prospective tenants or buyers should consult their professional advisors and conduct their own independent investigation. Site plan and configuration are subject to change. Properties are subject to change in price and/or availability without notice. West Coast Commercial Realty, LLC

WCCR

West Coast Commercial Realty



BUSINESS OPPORTUNITY

9823 15TH AVENUE SW ♦ SEATTLE, WA 98106



Julie Shizukuishi

(206) 283-5212

www.wccommercialrealty.com



DISCLAIMER: The above information has been secured from sources believed to be reliable, however, no representations are made to its accuracy. Prospective tenants or buyers should consult their professional advisors and conduct their own independent investigation. Site plan and configuration are subject to change. Properties are subject to change in price and/or availability without notice. West Coast Commercial Realty, LLC

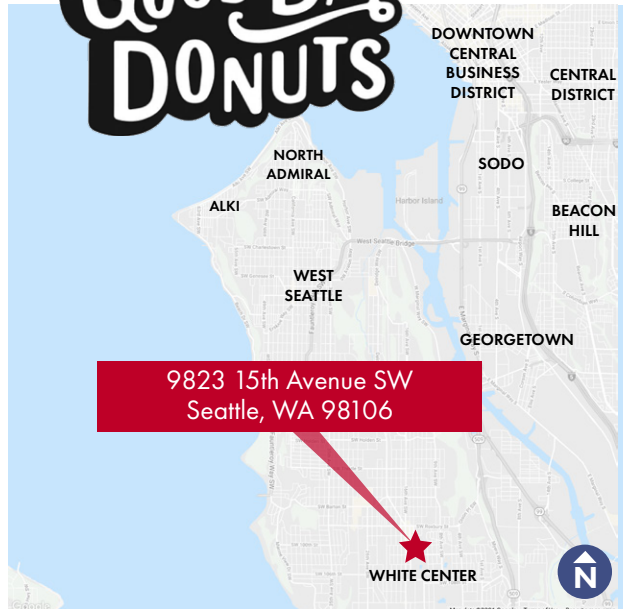
WCCR

West Coast Commercial Realty



BUSINESS OPPORTUNITY

9823 15TH AVENUE SW ♦ SEATTLE, WA 98106



DEMOGRAPHICS

AVERAGE HOUSEHOLD INCOME

3-Mile: \$105,894
5-Mile: \$109,161
10-Mile: \$129,330

TOTAL POPULATION

1-Mile: 22,118
3-Mile: 115,830
5-Mile: 278,001

TOTAL EMPLOYEES

1-Mile: 4,240
3-Mile: 86,653
5-Mile: 163,478



75
Bike Score
"Very Bikeable"



86
Walk Score
"Very Walkable"



Julie Shizukuishi

(206) 283-5212

www.wccommercialrealty.com

WCCR

West Coast Commercial Realty



DISCLAIMER: The above information has been secured from sources believed to be reliable, however, no representations are made to its accuracy. Prospective tenants or buyers should consult their professional advisors and conduct their own independent investigation. Site plan and configuration are subject to change. Properties are subject to change in price and/or availability without notice. West Coast Commercial Realty, LLC